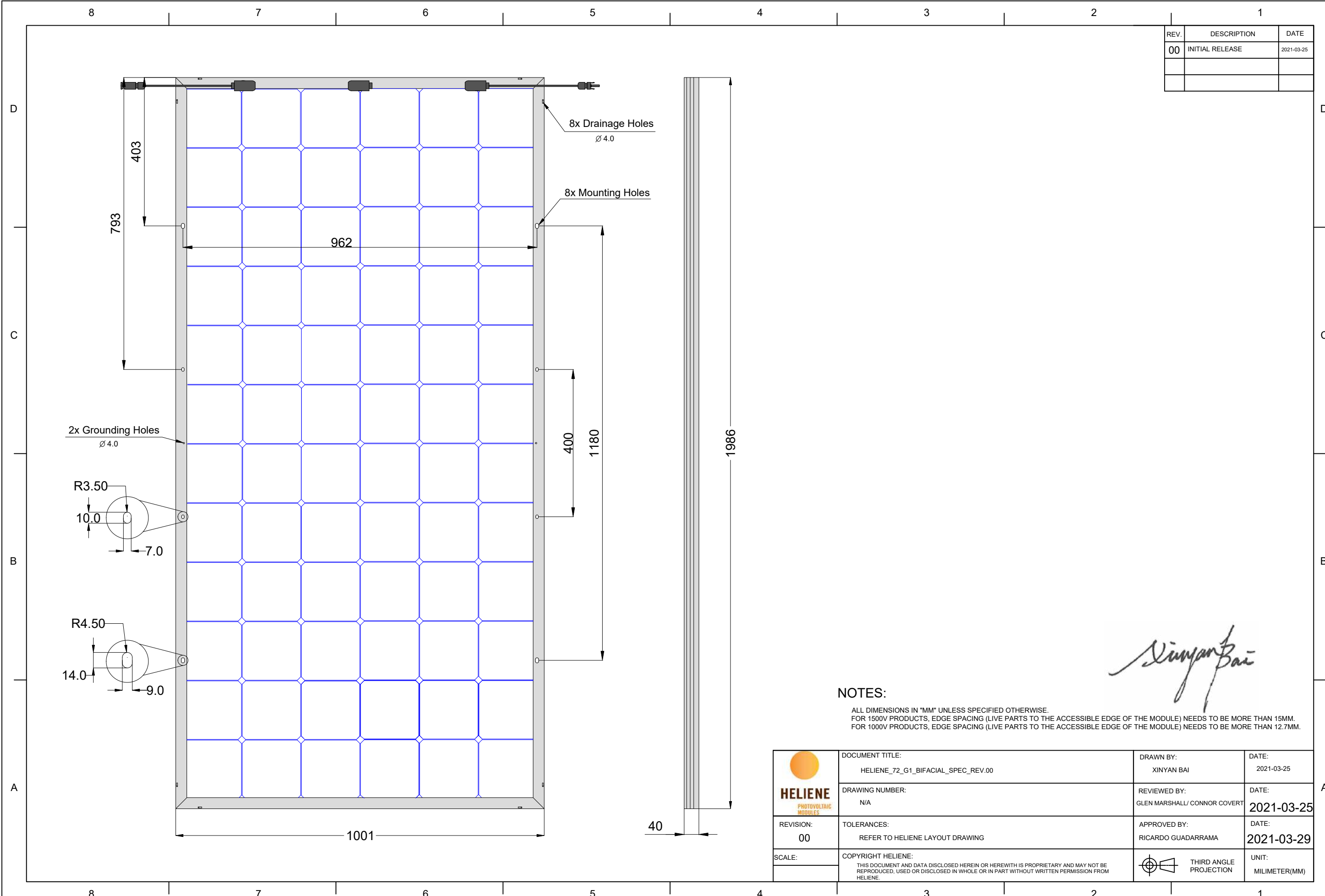




REV.	DESCRIPTION	DATE
00	INITIAL RELEASE	2021-03-25



Xinyan Bai

NOTES:

ALL DIMENSIONS IN "MM" UNLESS SPECIFIED OTHERWISE.
 FOR 1500V PRODUCTS, EDGE SPACING (LIVE PARTS TO THE ACCESSIBLE EDGE OF THE MODULE) NEEDS TO BE MORE THAN 15MM.
 FOR 1000V PRODUCTS, EDGE SPACING (LIVE PARTS TO THE ACCESSIBLE EDGE OF THE MODULE) NEEDS TO BE MORE THAN 12.7MM.

	DOCUMENT TITLE: HELIENE_72_G1_BIFACIAL_SPEC_REV.00	DRAWN BY: XINYAN BAI	DATE: 2021-03-25
	DRAWING NUMBER: N/A	REVIEWED BY: GLEN MARSHALL/ CONNOR COVERT	DATE: 2021-03-25
REVISION: 00	TOLERANCES: REFER TO HELIENE LAYOUT DRAWING	APPROVED BY: RICARDO GUADARRAMA	DATE: 2021-03-29
SCALE:	COPYRIGHT HELIENE: THIS DOCUMENT AND DATA DISCLOSED HEREIN OR HEREWITH IS PROPRIETARY AND MAY NOT BE REPRODUCED, USED OR DISCLOSED IN WHOLE OR IN PART WITHOUT WRITTEN PERMISSION FROM HELIENE.	 THIRD ANGLE PROJECTION	UNIT: MILIMETER(MM)